

# 2017 Portfolio



Bury St Edmunds, Suffolk  
[www.buryinbloom.org.uk](http://www.buryinbloom.org.uk)



# Funding and Support



**Bury Free Press**



**The Bressingham Gardens**



# Index

<b>Introduction</b>	4
<b>Team Names and Roles</b>	4
<b>Information on the Community</b>	5
<b>Information on Themes</b>	6
<b>Goals for the Future</b>	7
 <b>Section A - Horticultural Achievement</b>	
<b>A1 - Impact</b>	
Guildhall Troughs	8
Roses from Compiègne	8
Nowton Park	9
<b>A2 - Horticultural Practice</b>	
Abbey Gardens Rose Garden	10
Hanging Baskets	11
<b>A3 - Residential and Community Gardening</b>	
John Williams Sculptures in the Abbey Gardens	12
West End Corner – New Flower Beds	13
Around the Town Throughout the Year	14
Allotments	15
<b>A4 - Business Areas and Premises</b>	
Flight of Peace unveiled September 2016	16
New Bench on Eastgate Street	17
<b>A5 - Green Spaces</b>	
Purple4Polio	17
Abbey Garden Friends	18
 <b>Section B - Environmental Responsibility</b>	
<b>B1 - Conservation and Biodiversity</b>	
Bury Water Meadows Group	19
<b>B2 - Resource Management</b>	
Crafty Creatures	20
<b>B3 - Local Heritage</b>	
Trees in Town	21
30 Trees	21
Whitsun Fayre	22
<b>B4 - Local Environment Quality</b>	
Grey to Green - School Yard	23
<b>B5 - Pride of Place</b>	
New Cathedral Planters	23
 <b>Section C - Community Participation</b>	
<b>C1 - Development and Continuity</b>	
RHS School Gardening / WSC Catering Students	24
<b>C2 - Communication and Education</b>	
Bee Friendly Garden	25
Busy Green Fingers	26
Young Green Fingers	27
Senior Green Fingers	28
Certificates of Merit	28
<b>C3 - Community Participation</b>	
B29 Super Fortress Workshop	29
Gateway Dementia Hub	30
<b>C4 - Year Round Involvement</b>	
Regimental Museum Daffodils	30
River of Flowers Tidy Up	31
<b>C5 - Funding and Support</b>	
St Edmunds Crown	32
Sponsorships	33

Portfolio produced by Premier Printers Ltd. All images in this portfolio were produced over the last eighteen months. Photographs kindly provided by committee members, Bury in Bloom supporters, St Edmundsbury Borough Council, Bury Free Press and the East Anglian Daily Times. Press cuttings by kind permission of Bury Free Press, East Anglian Daily Times and The Mercury.

# Introduction

Bury St Edmunds in Suffolk is a historic market town with a richly fascinating heritage.

The town has a striking mix of medieval architecture, elegant Georgian squares, a modern shopping centre, an award-winning market, and a variety of visitor attractions including the stunning Abbey Gardens and Cathedral.

Now in its 31st year, Bury in Bloom is an independent charity run by the Bury St Edmunds Society and is made up of volunteers, one part-time paid coordinator and representatives from the local authority, community, business and education sectors.



The West Front - June 2016

## Team Names and Roles

<b>Robin Burnett</b>	<b>Chairman</b>
<b>Melanie Lesser</b>	<b>Bury In Bloom Co-ordinator</b>
<b>Graham Maynard</b>	<b>Park Manager</b>
<b>Rebecca Davis</b>	<b>Horticultural Officer</b>

Lance Alexander	TIC and Heritage Operations Manager
Douglas Beardon	Treasurer
Jacqueline Burnett	Bury in Bloom Secretary
Karen Cannard	Recycling consultant
Patrick Chung	Town Council
Elizabeth Clement	Certificates of Merit
Mark Cordell	Our Bury St Edmunds Sponsor
Alison Findley	RHS
Pam Fletcher	Busy Green Fingers
Michelle Freeman	The Crafty Foxes
Jean Hardy	Young Green Fingers
Sue Herriott	Head Teacher
Chris Hodgson	Senior Green Fingers
Sandy Jackson	Photography
Diane Knights	Hidden Gardens
Jo Kreckler	Greene King
Errol Lovick	Contractor
Sandy Miles	Portfolio and Photography
Stefan Oliver	Allotments
Tim Page	Chairman Bury Society
Lynda Seldis	Abbey Garden Gardeners/Well Street
Cllr Andrew Speed	Chairman Town Council
Rob Steggles	Website
Carol Street	Photography
Jo Sweetman	Photography
Sue Thompson	Allotments and Senior Green Fingers

Rose Frame made by Tudor Rose Florists - Whitsun Fayre June 2017



# Information on the Community

## Legend of St Edmund

St Edmund was an Anglo-Saxon King and ruled East Anglia between 855AD and 869AD.

He was killed by Viking raiders. They shot arrows into him until he bristled like a hedgehog, then they cut off his head and threw it deep into the briars in the forest.

Edmund's body was found by his followers. When they heard a voice shouting "here, here, here", they followed the sound and found the head guarded by a wolf. When the head was put back with the body it miraculously became reattached. This was felt to be a sign of sainthood and many miracles were then attributed to Edmund and his shrine in Bury St Edmunds became a place of pilgrimage. This resulted in the growth and prosperity of the Abbey and the town.

St Edmund's day is November 20th and this year more celebrations are planned.



Southgate Roundabout - December 2016



Cathedral - March 2017



Bury St Edmunds is located in the middle of an undulating area of East Anglia known as the East Anglian Heights, the Rivers Lark and Linnet pass through the town.

The population is just over 35,000.

Bury St Edmunds and its catchment area is a two-tier education system. West Suffolk College and University Campus Suffolk are the town's provider of further and higher education.

One of the largest employers in Bury is Bloom's new sponsor is the Greene King Brewery, with a Brewery and pubs throughout the town.

Abellio Greater Anglia operate the railway station linking to Ipswich and Cambridge. The town bus station provides links to all the communities and villages around the town.



# Information on Themes

The colour themes throughout the town have been designed by Rebecca Davis the Horticultural Officer from the St Edmundsbury Parks Department together with Bury in Bloom and local supplier Woolpit Nurseries.

The Nursery won the contracts for both the Bury in Bloom baskets and the St Edmundsbury Borough Council baskets. This has enabled the town to have a much more coordinated approach to the style and colours used in the hanging baskets. The predominant colours used in 2017 are: a regal burgundy theme, a cool blue theme and a hot pink/lavender theme and these same colours are picked up in the planters, beds and other displays around the town so that overall, all the plantings sit well together and a harmonious effect is achieved.



Pillar of Salt, Angel Hill - April 2017



Abbey Gardens - July 2016



Angel Hill - April 2017



Angel Hill Tulips - April 2017



Abbey Gardens - April 2017



# Goals for the Future

## Lighting to Flight of Peace Roundabout

The 'Flight of Peace' sculpture on the Mount Road roundabout is a symbolic remembrance of the gallant American servicemen, part of the United States' 8th Air Force, based at Rougham airfield during World War II. The sculpture represents the tail insignia shown on the B17s. The landscaping of the roundabout represents the United States' five pointed white star in a blue circle.

This year we plan to light the sculpture with lighting that will enable us to have different colours for different anniversaries, for example red for Remembrance Sunday.

New Lighting to be Installed in October 2017



## More Grey to Green Projects

We are working with the RHS to look at areas to turn green and our Certificate of Merit Team will be looking at the possible areas to transform as they look at the front gardens of the town.

## More Trees around Town

Following the success of working with the RHS and the West Suffolk College Bury in Bloom is looking to turn more areas to turn green. Certificate of Merit Team will be helping by highlighting possible areas to transform as they go around the town looking at the front gardens.

## 30 Trees

We have already planted 20 trees around the town and would like to plant more to soften the urban landscape, we are working with local councillors to highlight areas where these trees can be planted.

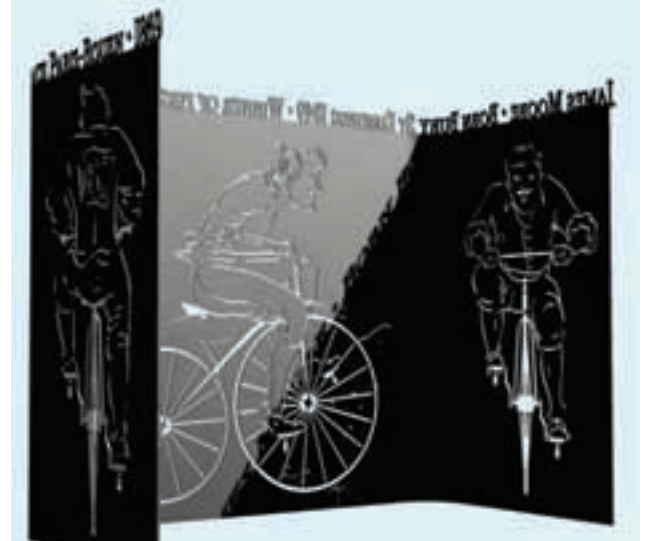
## A new town trail inspired by the end of World War I

Artists have been asked to submit their ideas for the town trail to be held in the summer of 2018.

## New Roundabout Sculpture

We are planning a new sculpture for 2018, it will feature James Moore who was probably the winner of the world's first bike race, held over a 1,200 yard course in a Paris. He was born in Bury St Edmunds, though his family had moved to Paris when he was four years old.

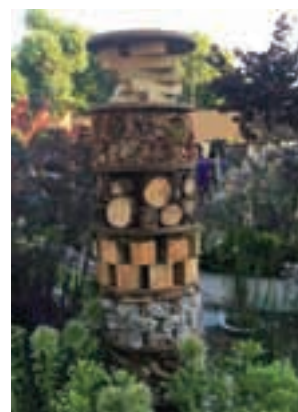
Local artists have been invited to give design ideas.



Nigel Kaines from Designs on Metal



Elizabeth Cooke from Lark Valley Willow



## Bug Hotels

Inspired by this bug hotel spotted at RHS Chelsea, we plan to have a number of them made for the Abbey Gardens and Nowton Park.



# Section A - Horticultural Achievement

## A1 - Impact

### Guildhall Troughs

Four reservoir troughs were put on the railings outside the historic Guildhall on Guildhall Street last summer. Woolpit nurseries supplied the planting and the new troughs will be replanted each summer with a colour scheme to match the baskets.



Guildhall Reservoir Troughs - July 2016



Guildhall Trough - June 2017

### Roses from Compiègne

2017 marked the 50th anniversary of the twinning of Bury St Edmunds with Compiègne in Northern France with the Mayor of Compiègne sending a gift roses to Bury to mark the occasion. The roses have been planted in the Abbey Gardens near the Mustow Street entrance and will flower in June.

In 1967 Mayors of the two towns signed a Charter in which they stated that "they are honoured to link in a bond of friendship and will henceforth encourage the

making of such linguistic, cultural, social and other links between the peoples of our two towns as we further the friendship and mutual understanding". The Friends of Compiègne meet in Bury on a regular basis and continue to promote links.



Rosier 'Palais Impérial de Compiègne' Stock Image



Elizabeth Bailey, Chairman of Friends of Compiègne and Julia Wakelam, Mayor of Bury St Edmunds - March 2017



# Section A - Horticultural Achievement

## A1 - Impact

### Nowton Park

Nowton Park consists of almost 200 acres of beautiful Suffolk countryside landscaped over 100 years ago in typical Victorian style. Until 1985 the park formed part of the Oakes family estate. It is now owned by St Edmundsbury Borough Council and managed for recreation, leisure and nature conservation. Routes around the park vary from a thirty minutes stroll to a one hour walk on the circular path on the perimeter of the park.



Nowton Park Visitor Centre - March 2017



Nowton Park Sheep at Sunset - January 2017

One of the Many Activities for Children over the Holidays - January 2017



Nowton Park Daffodils - March 2017 and Through the Seasons



# Section A - Horticultural Achievement

## A2 - Horticultural Practice

### Abbey Gardens Rose Garden

Graham and his team have done a huge amount of work in the Rose Garden with Abbey Gardens Friends funding new roses, compost, soil, ties, stakes, manure and all the new lavender plants.



The Rose Garden - June 2017



The Gardeners Hard at Work in The Rose Garden  
- February 2017



New Lavender in The Rose Garden - June 2017



Memorial Tree in The Rose Garden New in 2016  
- Photograph Taken January 2017



# Section A - Horticultural Achievement

## A2 - Horticultural Practice

### Hanging Baskets

Bury in Bloom have their own reservoir baskets which can be supplied to both businesses and private households throughout the town. The baskets are watered and maintained throughout the summer. This summer sees in excess of 350 baskets supplied by Bury in Bloom and together with baskets supplied by the Borough council, there will be over 550 hanging baskets in the town.



'Everyone' Wanted to be in a Bury in Bloom Hanging Basket! - Summer 2016



Busy Planting the Baskets at Woolpit Nursery - May 2017



Hanging Basket - Spring 2017



Hanging Basket - Summer 2016



Hanging Baskets in Langton Place - August 2016



# Section A - Horticultural Achievement

## A3 - Residential and Community Gardening

### John Williams Sculptures in the Abbey Gardens

Local artist John Williams has carved sculptures for the Abbey Gardens using wood from Nowton Park. Bury in Bloom produced a poster to explain more about each sculpture with The Bury Society Chairman, Martyn Taylor helping with the historic information. The poster was also used to advise visitors what time they could watch John actually carving in the disused aviary in the Gardens. There was excellent press coverage...even a video on Twitter!



John at work - February 2017



A Family Watch John Working - February 2017

**LOCAL ARTIST JOHN WILLIAMS IS CARVING FOUR SCULPTURES FROM NATURALLY SOURCED ELM FROM NOWTON PARK**

The sculptures will depict the craftsmen that have worked on the St Edmundsbury Abbey over the centuries  
When all the sculptures are complete they will be sited around the gardens

**The Mason**

The mason was a man dedicated to his craft, competent in the use of his various tools but also in design and forward planning. The choice of building stone was that of an Oolitic cream coloured limestone from Barnack, Cambridgeshire. After being quarried, it was probably brought on barges over the un-drained fens and then via the rivers Ouse and Lark. The limestone would then be cut into ashlar blocks, left to set in position, then a slurry mixture of lime mortar and flint would be poured in between the blocks, this flint mixture can be seen exposed in the abbey ruins today.

**The Scribe**

The Benedictine monks who worked with quills under candlelight in the Scriptorium would produce the most wonderful illuminated works such as the Bury Psalter. Master Hugo a virtuoso artist who was commissioned by Abbot Anselm created the detailed illuminated medieval Bury Bible in 1135, he is also thought to have carved the Bury Cross in walrus ivory (now at the Metropolitan Museum of Art in New York). A copy of the cross is on display in the St Edmundsbury Cathedral's Treasury. The day to day running of the Abbey was recorded in the Gesta Sacristarum, however the best account of life here in Bury St Edmunds was The Chronicle of Brother Jocelyn of Brakelond, a monk writing in the late 13th century.

**The Herbalist**

The sixty to eighty monks together with their servants who lived here were reliant on herbs from the herb garden to help with their well-being and to flavour their food. The person trusted to look after it was the Herbalist. Some of the plants cultivated by them had properties not fully understood then but obvious now. For example, White Willow has salicylic acid used for skin complaints and from which we get aspirin. Today, the planting in The Pilgrims Herb Garden in the Abbey Gardens near the Pilgrims Kitchen cafe is based on the Bury Herbal written and illustrated in the 11th century which is now in the Bodleian Library, Oxford.

**The Physician**

Belwin was not only Abbot of St Edmundsbury Abbey but also physician to King Edward the Confessor and King William I 'The Conqueror'. In medieval times, medical care was very limited but Bury St Edmunds had six hospitals which not only looked after your body but also your soul in preparation for the afterlife. Actual operations were few and far between and the teachings of the 2nd century Greek physician, Galen, would hold true for 1500 years as great belief was put into the four humours, Black and Yellow Bile, Blood and Phlegm. The Abbey had the Minutor who was the Blood or Barber-Surgeon and the Infirmer who looked after the sick monks.

Information on the Sculptures - February 2017



Preparing the Post for Installation in Late June 2017



# Section A - Horticultural Achievement

## A3 - Residential and Community Gardening

### West End Corner – New Flower Beds

A small corner on the western side of town was given a new lease of life by Pr oscape when they planted up a flower bed to a design from Horticultural Officer, Rebecca Davis. Mr Curry who owns the nearby West End Shoe Repairs has now re-painted the front of his shop as he feels the area looks so much smarter now....just shows the power of plants!



West End Shoe Repairs - Spring 2017



West End Corner Before Planting - August 2016



West End Corner After - June 2017



# Section A - Horticultural Achievement

## A3 - Residential and Community Gardening

### Around the Town Throughout the Year



The Atheneum - March 2017



Churchgate Street - June 2017



Abbey Front - June 2017



The Arc Shopping Centre - March 2017



One of the Wolves from 2016 in his New Home - June 2017



Spring Pots on Chequer Square - April 2017



St John's Street - March 2017



Planters on Eastgate Street - May 2017

Every Nook and Cranny was Blooming - June 2017





# Section A - Horticultural Achievement

## A3 - Residential and Community Gardening

### Allotments

Since 2006 The Town Council has been responsible for the management of over 295 allotment plots on five sites at Bar n Lane, Cotton Lane, Nowton Road, Sicklesmere Road and the Vinefields.

The 2016 Allotments Competition saw a presentation to the winners and finalists at the Council's offices on 15 November 2016 as part of the St Edmund's Day celebrations.

Vouchers were kindly donated by Marlow's Home & Garden Centre of Bury St Edmunds, Thompson

& Morgan of Ipswich, Bury St Edmunds Garden Centre, along with the three 'St Edmund' roses donated by Cants of Colchester, together with packets of seeds donated by Mr Fothergills were all presented by Allotments Champion, Stefan Oliver.



Nowton Road Allotment - June 2017



Nowton Road Allotments - June 2017

### Hidden Gardens and Open Gardens

Hidden Gardens gives people the chance to discover the secret patios, lawns, borders, vegetable gardens, greenhouses and other features behind the facades of the high walls.

The Moreton Hall community on the edge of Bury St Edmunds sees residents opening their gardens for the fifth year in a row.

Busy Bee - April 2017





# Section A - Horticultural Achievement

## A4 - Business Areas and Premises

### Flight of Peace unveiled September 2016

The B17 Flying Fortress commemoration sculpture, with a dove of peace blossoming from it, was officially revealed in front of scores of schoolchildren, US airmen and Bury St Edmunds residents, commemorating the US Air Force's arrival at Rougham Airfield in 1943.

White doves were released and there was also a flypast by a DHC-1 Chipmunk, which then landed at the airfield.

The aircraft from Rougham Airfield were identified by the letter A in a square background on the tail-fin, which is captured in the new sculpture.

The creation of the statue was a joint venture with the Bury Town Council and Bury in Bloom as well as St Edmundsbury Borough Council and Taylor Wimpey, who built the platform upon which the statue stands.

Nigel Kaines, of Designs on Metal, built the sculpture.



The Flight of Peace Statue - September 2016



Close Up of the 'Dove' - September 2016



US Airmen Watch the Flypast from the Tower at Rougham Airfield - September 2016.



The Stars and Stripes and the Union Jack Together - September 2016

## 'Uplifting' statue finally unveiled

Chris Shimwell

chris.shimwell@archant.co.uk

Years of hard work culminated in a flypast and doves of peace soaring above Moreton Hall on Monday as a long-awaited statue was unveiled.

The B17 Flying Fortress commemoration sculpture, with a dove of peace blossoming from it, was officially revealed in front of scores of schoolchildren, US airmen and Bury St Edmunds residents, commemorating the US Air Force's arrival at Rougham Airfield in 1943.

"The sculpture you see before you today is a symbolic remembrance of the gallant American servicemen based at the Rougham airfield during the Second World War who, by preparing, maintaining and flying these B17 Flying Fortress bombers on 325 missions between June 1943 and April 1945, contributed to lasting peace in Europe," Clive Springett told the assembled crowd. A town councillor for Moreton Hall, Mr Springett first had the idea back in 2005 for a



■ The Flight of Peace sculpture was unveiled on the roundabout junction of Mount Road and Lady Miriam Way.

Photos: GREGG BROWN

sculpture on the Lady Miriam Way roundabout.

An initial proposal proved too expensive, but after reworking a new scheme, it was accepted and constructed.

"It's absolutely amazing," he said

after eventually seeing it. "It's the moment where it takes your breath away. To only see it as a drawing and then see it in its entirety is amazing, it really is.

"I think it's a really good uplifting piece of artwork which

brings the old and new together."

He said the monument was meant to celebrate peace and not become a memorial.

"It's taken a while to get here, as most things do, but it was well worth the wait," he said.

White doves were released on Monday and there was also a flypast by a DHC-1 Chipmunk, which then landed at the airfield.

The aircraft from Rougham Airfield were identified by the letter A in a square background on the tail-fin, which is captured in the new sculpture.

Bury Town Council and Bury in Bloom were both praised for the statue's eventual creation, as well as St Edmundsbury Borough Council and Taylor Wimpey, which built the platform upon which the statue stands.

The 8th airforce, 94th bombardment group landed at Rougham in June, 1943.

"A relationship was created between our town and the US Airforce, which is still going strong



today through the personnel based at RAF Mildenhall and RAF Lakenheath," said Mr Springett.

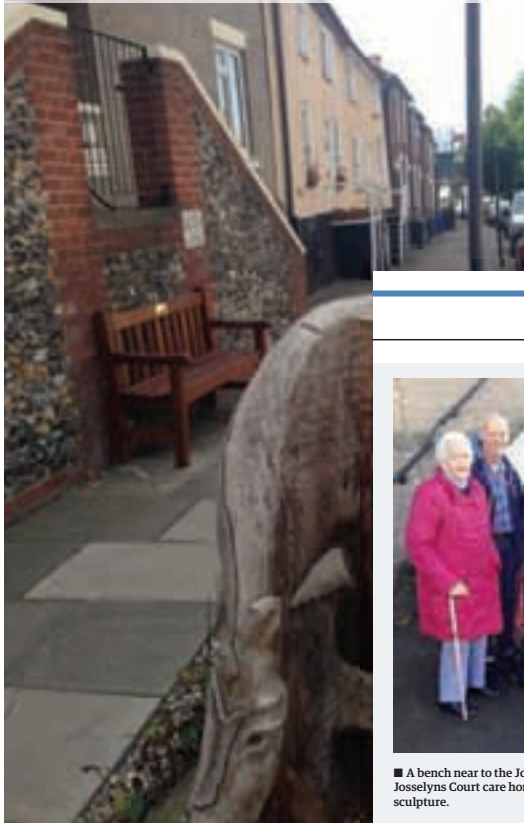
Roy Proctor was praised for designing the revised sculpture after the previous design fell through, as was Nigel Kaines, of Designs on Metal, who built the sculpture and has also constructed other works found on Bury roundabouts.



# Section A - Horticultural Achievement

## A4 - Business Areas and Premises

New Bench Near Brother Josselyn  
- October 2016



### New Bench on Eastgate Street

A new bench in Eastgate Street next to the John Williams 'Brother Josselyn' sculpture was paid for by county councillor Trevor Beckwith's locality budget. The bench, which replaced an old dilapidated one, was installed as part of a joint 'Love Where You Live' initiative between Bury in Bloom and the district and borough councils to encourage people to take pride in their local area.

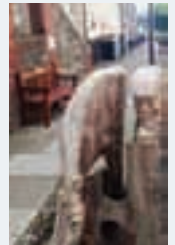
Wednesday, October 12, 2016 | EAST ANGLIAN DAILY TIMES



### Bench with a view of newly carved sculpture

Residents of a Bury St Edmunds street can sit on a newly unveiled bench and admire a special sculpture that was carved out of an old tree stump.

The bench, in Eastgate Street, was paid for with £1,025 from county councillor Trevor Beckwith's locality budget. It is next to the 'Brother Josselyn' sculpture, which was made by retired local teacher John Williams. The bench, which replaced an old dilapidated one, was installed as part of a joint 'Love Where You Live' initiative between Bury in Bloom, the



■ The sculpture and the bench

district and borough councils to encourage people to take pride in their local area.

■ A bench near to the Josselyn sculpture in Bury has been unveiled. Pictured are residents of the Josselyns Court care home with reps from Bury in Bloom and the artist who carved the nearby sculpture.

Photo: CONTRIBUTED

## A5 - Green Spaces

# Purple 4 Polio

The purple crocus is a symbol of Rotary's worldwide campaign to eradicate polio, with its colour representing the purple dye used to mark the finger of a child to indicate they have received their life saving oral polio vaccine.



A Carpet of Purple Corcuses on Parkway -  
Spring 2017

The continuing partnership between Rotary International and the Royal Horticultural Society together with Rotary clubs, Britain in Bloom groups and other RHS community gardening groups was a huge success in 2016, with nearly 7 million purple corms being planted across Great Britain and Ireland resulting in a carpet of purple in communities during spring 2017.





# Section A - Horticultural Achievement

## A5 - Green Spaces



The Abbey Gardens Friends are an independent group of volunteers from the local community who themselves enjoy the Gardens and who wish to contribute to the pleasure which others derive from their visits there. They are not a lobby group and work within the parameters set by St. Edmundsbury Borough Council and English Heritage.

In 2016 the Friends donated £3,765 for the restocking of a herbaceous border opposite the Rose Garden and for the installation of 44 oak posts in the central bedding area to support the rambling roses and a Nathaniel Hobson clematis, named after the originator of the Abbey Gardens.



1st Prize in the AGF Photo Competition -  
Age 4-8 Francesca Freeman - Pretty in Pink  
- February 2016



Abbey Garden Friends Help the Gardeners with  
Some New Planting - April 2017



Gardeners Putting in the New Posts - May 2017



Border Opposite the Rose Garden - June 2017



Abbey Gardens Friends working on the improvement projects.

Picture: ABBEY GARDENS FRIENDS

The second project, which is ongoing, involves installing 44 oak posts to support climbing plants in the central bedding area.

The funds include the planting of the Nathaniel Hobson clematis in memory of the originator of the Abbey Gardens. By 1820, he had transferred his personal

collection of plants to the new botanic garden at the east of the churchyard, which was at the south eastern corner of the Abbey Grounds. He had to pay rent of £60 a year.

The borough council is also providing new rambling roses to climb the oak support posts.

Graham Maynard, Abbey Gardens park manager, said: "We are very grateful for this funding from the Abbey Gardens Friends and the work of their volunteer gardeners to help us enhance the Abbey Gardens which are treasured by so many local people and visitors."



# Section B - Environmental Responsibility

## B1 - Conservation and Biodiversity



The Bury Water Meadows Group exists to safeguard ancient open space and water meadows in Bury St Edmunds for the people and wildlife Hosts of Lark Catchment Partnership.

Using funding from the Environment Agency, they engaged in three litter picking operations across the water meadows and a turf laying project on the river bank by Abbot's bridge. There was also a river restoration project underneath the foot bridge in the Abbey Gardens.

Wildflower turf was laid to combat the issue of bank erosion on the Abbey Garden side. The turf knits the soil together and provides valuable nectar plants for bees. Will Cranstoun, of Suffolk Wildlife Trust, volunteered his expertise and Simon Collin, of St Edmundsbury Borough Council, helped with the turf laying.

Bury Water Meadow Group Members - November 2016



Wildflower Planting in No Mans Meadow - October 2016



River Restoration Project at Abbey Gardens - March 2017



# Section B - Environmental Responsibility

## B2 - Resource Management

### Crafty Creatures

The Crafty Foxes were once again working with Bury in Bloom, promoting this year a Crafty Creature Competition which was open to all.

Participants were invited to recycle plastic bottles, tubs and cartons to create a planter which, in the process, is transformed into a 'creature'. They could then go along to Woolpit Nursery and pick up some free plants to grow in their Creature Planter.

The idea was to be creative with the choice of plants; thinking about textures, colours and shapes which work best with their creature. Spiky plants might suit a hedgehog and perhaps lettuce leaves for a rabbit.

The aim of the Competition was to encourage recycling and upcycling of everyday waste by re-using items in an imaginative way. The final product is something that is great fun to make, environmentally friendly and hopefully wonderful to admire; a great project in which all ages can get involved!



Beth Michael, age 7, Made a Bearded Dragon - May 2017



A Crafty Creature Hedgehog - May 2017



A Crafty Creature Pig - May 2017



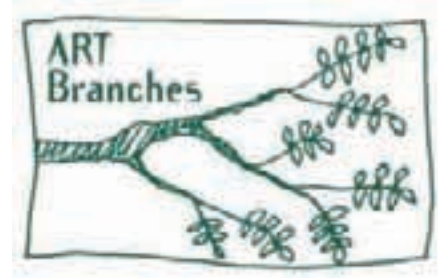
# Section B - Environmental Responsibility

## B3 - Local Heritage

### Trees in Town

Trees in Town' is an Art Branches community interest company project which forms part of the Woodland Trust's national Tree Charter, collecting tree stories and illustrations from across the community.

Art Branches will be raising awareness of trees across Bury St Edmunds town centre. Trees in Town will result in an online exhibition of all entrants' impressions of trees, and a booklet with winning entries depicting various trees in the town will be available at the end of the project.



April 2017



April 2017

### 30 Trees

Communities were encouraged to apply for one of the 30 anniversary trees to be spread across Bury. Alan Jary, former chairman of Bury in Bloom in 2016, said: "We are encouraging people to do the work and put a scheme together to brighten up their area of the town. The borough council will provide all the equipment they need for the work and give horticultural assistance.



One of the 30 Trees at St John's Church - February 2017



One of the 30 Trees Outside the Apex - June 2017



# Section B - Environmental Responsibility

## B3 - Local Heritage

### Whitsun Fayre

The fayre, which started as a flower and plant sale in Bury, marked its 20th year with two celebrity gardeners, Joe Swift from BBC Gardeners World and Katie Rushworth from ITV's Love your Garden, taking questions and giving advice on the Gardeners' Stage. Tudor Rose Florists were also on the stage demonstrating flower arrangements.

The event was held over Sunday and the Bank Holiday Monday, with various attractions across the town centre. There were flower and plant stalls in Buttermarket, and Cornhill, a motor show on Angel Hill as well other events.

The family event also saw a mini-farm set up in Abbeygate Street, giving children the chance to meet a variety of animals including pygmy goats, miniature pigs, an alpaca, a miniature horse and more.



Tudor Rose Florists Demonstration on Stage - June 2017



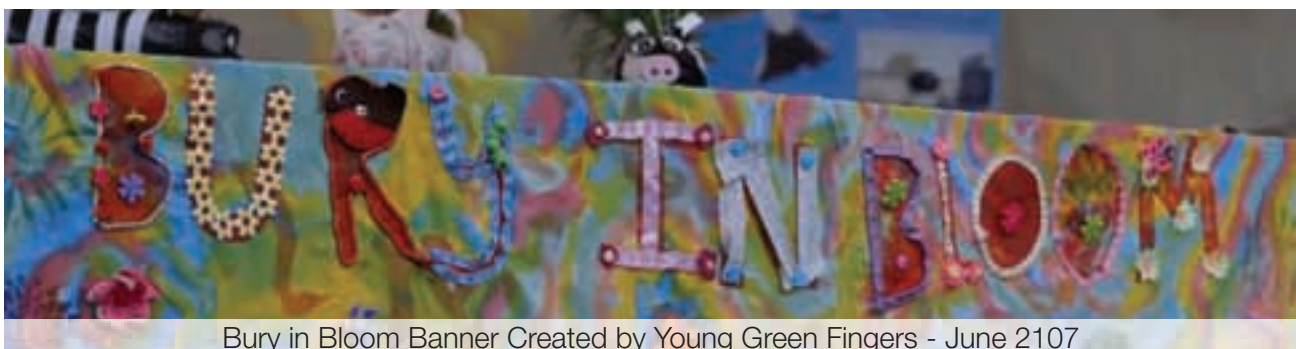
Katie Rushworth on Stage - June 2017



Green Man at the Whitsun Fayre - June 2017



Celebrity Gardener Joe Swift on Stage - June 2017



Bury in Bloom Banner Created by Young Green Fingers - June 2107



# Section B - Environmental Responsibility

## B4 - Local Environment Quality

### Grey to Green - School Yard

Focus 12, the RHS, Bury in Bloom, St Eds BC and local residents from Nelson Road were involved in clearing an area at the back of the car park in the School Yard. Trees and wild flowers were then planted on the site in April 2017.



Original St James' National School  
Demolished in 1937



Area Cleared and Knee Rail in Place - April 2017



School Yard Planting - June 2017

## B5 - Pride of Place

### New Cathedral Planters

Nine wooden planters returned to the St Edmundsbury Cathedral Precinct after restoration work was completed by Realise Futures based at Nowton Park Nursery. The restoration was paid for by Bury in Bloom as part of their 30th Anniversary.

The original planters had been paid for by the local community including a contribution by the late Sir Eldon Griffiths who had been MP for Bury St Edmunds.



■ Staff from St Edmundsbury Borough Council, Bury in Bloom Co-ordinator Melanie Lesser and David Ryman of Realise Futures tend to one of the planters

Photo: BURY IN BLOOM

### Planters back to their best after project

Dilapidated planters in a Bury St Edmunds beauty spot have been restored to their former glory thanks to a project helping people with learning difficulties.

Several planters outside the cathedral, within the Abbey Gardens area, have been repaired thanks to a partnership between Bury in Bloom, the St Edmundsbury Borough Council parks team and social enterprise Realise Futures.

Phil Ewing, from Realise Futures, said the project was a "brilliant" experience for those who took part, while parks manager Graham Maynard and In Bloom coordinator Melanie Lesser praised the workmanship.



# Section C - Community Participation

## C1 - Development and Continuity

### RHS School Gardening / WSC Catering Students

RHS, Bury in Bloom and St Edmundsbury BC started on a project with the West Suffolk College within the college grounds. The catering students designed a herb garden that will be sited near The Edmund restaurant in a raised bed built by the construction students.



Sharing the best in Gardening



West Suffolk College - June 2017



Measuring up for the Beds - April 2017



Planting up the Beds - June 2017



Watering the New Plants -  
June 2017



# Section C - Community Participation

## C2 - Communication and Education

### Bee Friendly Garden

A bee friendly garden was planted in the Abbey Gardens in July of 2016.

Rebecca Davis, Horticultural Officer, chose the plants to attract bees and other insects and they were planted in the bed underneath the mosaic in the Abbey Gardens.

Together with Michelle Freeman, from The Crafty Foxes, Bury and Bloom relaunched the successful Crafty Cans packs; the packs were available free of charge at various outlets around the town. The bees and ladybirds made by the children were then installed in the newly planted bee garden. New for Summer 2017 in the bee garden there will be a steel and willow sculpture of a gardener created by Elizabeth Cooke.



Front Page of East Anglian Daily Times



Insect Friendly Planting - June 2016



Plans for the New Installation Coming in - Summer 2017



Rebecca Davis, Horticultural Officer Together with Some Friends of the Abbey Gardens Plant the New Bee Garden - July 2016





# Section C - Community Participation

## C2 - Communication and Education

### Moreton Hall Community Centre

Dozens of Bury St Edmunds pre-school children celebrated their green-fingered efforts for Bury in Bloom in July last year.

The third annual Busy Green Fingers competition saw every child awarded with a certificate, with the 13 pre-schools and nurseries awarded £50 in gardening and Amazon vouchers each.

The garden party, held at Moreton Hall Community Centre, saw presentations from sponsors Treatt, which provided the prize money. The children grew their own flowers and vegetables while keeping diaries of their work.



A Planter all Ready for Planting! - July 2016



Planting up - July 2016



The Finished Planters - July 2016.

Thursday, July 21, 2016 | EAST ANGLIAN DAILY TIMES



■ Busy Green Fingers presentation at Moreton Hall Community Centre, Bury St Edmunds.

Photo: GREGG BROWN

## Nursery tots celebrate in bloom awards

Dozens of Bury St Edmunds pre-school children celebrated their green-fingered efforts for Bury in Bloom with a garden party last week.

The third annual Busy Green Fingers competition saw every child awarded with a certificate, with the 13 pre-schools and nurseries awarded £50 in gardening and Amazon vouchers each.

The garden party, held at Moreton Hall Community Centre, saw presentations from sponsors Treatt, which provided the prize money. The children grew their own flowers and vegetables while keeping diaries of their work. The judges gave advice and praise at the end.



# Section C - Community Participation

## C2 - Communication and Education



### Joe Swift Presentations

Schoolchildren in Bury St Edmunds took part in this year's Bury in Bloom's Young Green Fingers project. Eight schools received awards at a celebration evening at The Athenaeum and had a chance to meet Gardeners' World broadcaster Joe Swift.

The awards were presented by sponsors Daemmon Reeve, CEO of Treatt and Claudia Brackenbrough his PA. There was also a chance for guests to view stands from RHS Schools Gardening, St Edmundsbury Composting team, Suffolk Wildlife Trust and many others.



Joe Swift at RHS Stall - October 2016



Crafty Cans Winner - October 2016



Awards Ready for Presentation - October 2016

## Schools receive awards as they help green the future

BY LESLEY ANSLAW  
news@buryfreepress.co.uk  
Twitter: @buryfree

**Schoolchildren in Bury St Edmunds have been proving their gold standard as they took part in this year's Young Green Fingers project.**

Eight schools received awards at a celebration evening at The Athenaeum on Monday.

They also had a chance to meet Gardeners' World broadcaster Joe Swift who was in Bury to give a talk at The Apex.

The awards were presented by Daemmon Reeve, CEO of Treatt and Claudia Brackenbrough his PA.

Eight schools took part including County Upper School, the first upper school to participate. There was also a chance for guests to view stalls from organisations connected



Those taking part in the Young Green Fingers awards evening Picture: Mecha Morton

to Bury in Bloom, the umbrella organisation for Young Green Fingers.

Overall winner for outstanding achievement went to Guildhall Feoffment School while Abbots Green Primary

won the Crop to Fork award for good use of produce grown in the school garden. Other gold winners were Hardwick Primary, Howard Primary, Priory School, Sexton's Manor, St Edmunds Primary while County

Upper received silver.

Jean Hardy, project co-ordinator, said: "The response from children, teachers and staff exceeded our expectations. This was a lovely celebration of schools gardening."



Daemmon Reeve and Claudia Brackenbrough from Treatt Present the Awards - October 2016



# Section C - Community Participation

## C2 - Communication and Education

### Cornwallis Court

Seasoned gardeners were recognised with a presentation afternoon at Cornwallis Court in July. The annual Senior Green Fingers competition for nursing and residential homes is organised by Bury in Bloom committee member Sue Thompson and Chris Hodgson. The vouchers were awarded by representatives from the sponsors, Treatt.



Bury in Bloom Committee Members, Sponsors and Winners at the Presentation - July 2016

## C3 - Community Participation

### Certificates of Merit

Again in July a team of over 60 volunteers, drawn mostly from local residents but including some staff from Abbey Gardens, a local Housing Association and our sponsors, will be awarding our Certificates of Merit to the best of Bury's front gardens in residential and commercial properties.

The definition of 'front garden' is necessarily wide given the architectural variation in the town so gardens of every size, window boxes, pots and hanging baskets are all given equal consideration. The state of the gardens of many rented properties

has consistently been disappointing so this year we have enlisted the help of some of the major letting agents in informing their tenants of the Scheme. We hope that with that encouragement standards may rise and that we will exceed last year's total of

awards, when over 1300 Certificates were given out, and 48 properties, thought to be of special merit, received the Highly Commended award.





# Section C - Community Participation

## C3 - Community Participation

### B29 Super Fortress Workshop

Children in Bury St Edmunds had the chance to build a scale replica of a Boeing B-29 Superfortress with experts from the Imperial War Museum Duxford. The Partners in Flight workshop at Moreton Hall Community Centre took place thanks to county councillor Trevor Beckwith contributing some of his locality grant. Children were able to build a 1/8 scale model of the plane and explore its history and engineering.

The workshops followed the unveiling of the B-17 Flying Fortress statue on the Lady Miriam Way roundabout, highlighting Rougham Airfield's link with the US Air Force.



Adding the Landing Gear! - September 2016



Children Listening to the History and Engineering of the B29 - September 2017



Children from Abbots Green School Help Build the B29 - September 2016

burymercury.co.uk | Wednesday, September 28, 2016

25

NEWS

## B-29 bomber workshop at community centre

Children had the chance to build a scale replica of a Boeing B-29 Superfortress with experts from the Imperial War Museum Duxford at the weekend.

The Partners in Flight workshop, at Moreton Hall Community Centre, took place thanks to county councillor Trevor Beckwith putting some of his locality grant towards the visit.

They were able to build a 1/8 scale model of the plane and explore its history and engineering.

The workshops followed hot on the heels of the unveiling of the B-17 Flying Fortress statue on the Lady Miriam Way roundabout, highlighting Rougham Airfield's historic link with the US Air Force.

Bury in Bloom's Melanie Lesser said the workshops had been excellent.

On Friday children from Abbots Green and Sebert Wood primary schools attended and Saturday was open to the public.

"One family were brought along by their young son because he loved it so much on Friday," she said.

Boeing also sponsor the workshops and Melanie said the Duxford experts were "fantastic".

"These workshops for families and schools help with the history of our town which is what the roundabout sculptures do as well," she said.



Staff from the Imperial War Museum helping adults and children bring to life a model of a Second World War USAF Boeing B-17 Superfortress at the Moreton Hall Community Centre, in Bury St Edmunds on Saturday.

Pictures: ANDY ABBOTT



# Section C - Community Participation

## C3 - Community Participation

### Gateway Dementia Hub

Bury in Bloom commissioned a striking 18-foot long planter from Suffolk based social enterprise firm Realise Futures, which supports and employs adults with disabilities and/or disadvantages. The suggestion for the planter was made by Senior Green Fingers coordinator Sue Thompson with Nowton Park Nurseries providing some of the plants. The Staff and clients are delighted with the planter which comes to waist height to make planting easy for all.



Alison Metcalf from Nowton Park, Elaine Chennen and Alison Bloomfield from Gatehouse and Melanie Lesser and Robin Burnett from Bury in Bloom - April 2017



A Meercat Found his Way into the Flowers! - April 2017

## C4 - Year Round Involvement

### Regimental Museum Daffodils

The daffodils planted in October 2016 by students and Bury in Bloom volunteers behind the Regimental Museum, near West Suffolk College, bloomed beautifully in the Spring.

Sexton Manor School's Teacher, Claire Hall, said "We have been using the woods every week since planting and all of the children have loved watching the daffodils grow into the fantastic display they are today. Daffodils have brought great joy to us all and

*it is wonderful to watch the children week after week get more excited as more of the flowers bloom. The sea of yellow has brought great happiness to us all"*

The daffodils were also at their best in time for The Suffolk Regiment's Daffodil Sunday on March 26th.

A Sea of Daffodils - March 2017



Friday, October 21, 2016 | EAST ANGLIAN DAILY TIMES



Children planting daffodils along with Angela Bussey from the Marie Curie charity.

Photo: JO SWEETMAN

### Woods will be 'sea of yellow' next March

People will be able to enjoy even more daffodils at the Suffolk Regimental Barracks in Bury St Edmunds next March.

To celebrate Bury in Bloom's 30th anniversary, all ages got stuck into planting the bulbs in woods behind the barracks on Wednesday. Organised by Bury in Bloom, those to take part included students from Sexton's Manor Primary School, St Edmundsbury Primary School and West Suffolk College, as well as veterans from the Suffolk Regiment and Angela Bussey from the Marie Curie charity. Daffodil Day will be on March 26 next year.



# Section C - Community Participation

## C4 - Year Round Involvement

### River of Flowers Tidy Up

Adrian Bloom kindly came in March to help tidy up the River of Flower on the Tollgate Triangle. The Abbey Garden Friends and gardeners helped together with volunteers from St Edmundsbury Borough Council.



A River of Snowdrops Before the Tidy Up - February 2017



A River of Flowers - July 2016

East Anglian Daily Times | Friday, March 24, 2017

## Gardens expert helps recreate a 'river of flowers' on traffic island

CHRIS SHIMWELL  
chris.shimwell@archant.co.uk

**Gardeners in Bury St Edmunds can be inspired by a cascade of geraniums down the Tollgate Triangle - inspired by Bressingham Gardens' Adrian Bloom.**

The gardener of 50 years was in Bury on Thursday to help volunteers who were working on recreating the eye-catching floral display for the third year running on the traffic island close to the Tollgate pub.

Bury in Bloom's Melanie Lesser invited Mr Bloom in 2015 to recreate his river of flowers from the iconic Bressingham Gardens in Norfolk.

"I think this island certainly has attracted a lot of attention, which was one of the reasons we did it of course," said Mr Bloom. "It's called the river of flowers but in fact it's a river of a particular plant. The plant is the geranium rozanne."

Geranium rozanne is a hardy plant that flowers for much of the year.

Volunteers from Bury were on hand to help with pruning and weeding after the autumn and winter seasons.

"To get everybody together and get this done in one fell swoop is the best way to get this done really otherwise it's quite a big job," he said.

He described the plant as a "very famous and hardy geranium".

The finished product is



Volunteers clearing and pruning on the Tollgate Triangle ready for the river of flowers in the summer. Picture: CHRIS SHIMWELL

quite startling, with the Tollgate Triangle looking as though there is a river of flowers flowing down its slight slope.

Mr Bloom said anyone visiting the island in the summer would "always find something of interest".

He said many of Thursday's volunteers were experienced gardeners themselves.

"I'm able to just tell them what's the right thing to do at this time of year," he said. "Pruning is quite important. It's one of the reasons they're here."

Speaking of Bury in

Bloom, he added: "They've done a great job, I think, with the whole of that and what I was anxious to do was to show what a garden would look like - a year round garden. Obviously this is something that has relatively low maintenance for the council as well as individuals in their gardens but provides that year-round effect."

Bury in Bloom's Melanie Lesser added she invited Mr Bloom to the town to find a suitable spot for the geranium rozanne after hearing him speak about the plant at Anglia in Bloom.



Adrian Bloom and Volunteers Help with the Tidy Up - March 2017



# Section C - Community Participation

## C5 - Funding and Support

### St Edmund's Crown

Bury in Bloom and Greene King unveiled a new sculpture 'St Edmund's Crown' on the Cullum Road/Nowton Road Roundabout on Wednesday March 15th.

The sculpture made from metal and willow was created by local sculptor Elizabeth Cooke from Lark Valley Willow.

The willow was grown by Lark Valley Willow on the meadows near Greene King.

The inspiration for the sculpture are the crests for both Greene King and the Bury St Edmunds Town Council.

The crest for Bury St Edmunds Town Council shows the wolf guarding the head of St Edmund with three crowns beneath the wolf.



Children for Hardwick Primary School and South Lee School - March 2017



The new sculpture of a crown in Bury St Edmunds, unveiled by Stephen Cable and David Notley, who is retiring from the West Suffolk council's parks and landscaping team.

## Park keeper unveils new eye catching kingly sculpture on his last day before retirement

Not many people get to unveil a sculpture on their last day before retirement, but David Notley did just that when he lifted the cover off a new piece of Bury St Edmunds history.

The 64-year-old unveiled a new sculpture called St Edmund's Crown, which celebrates a key part of the town's history on one of its major roundabouts. The statue has been paid for by Greene King and Bury in Bloom. The roundabout is also sponsored by the company and the crown sculpture mirrors their logo of a crown and arrows.

For 64-year-old David, March 15 marked his last day after 42 years working for the parks and landscapes team at St Edmunds Borough Council.

"It's been enjoyable which is the reason I've been here so long," he said. "I've had more laughs here than tears."

He said it came as a complete surprise to be asked to unveil

CHRIS SHIMWELL

chris.shimwell@westsuffolk.co.uk

the sculpture. It is positioned on the roundabout between Cullum Road and Nowton Road, meaning it will become a familiar site to visitors coming from Sudbury and Ipswich.

"The crown is the emblem of the town but also the emblem of Greene King," said Bury in Bloom's Melanie Lesser.

Communications director Greg Sage from the brewery came to the opening and said while the company was now known across the country, it was keen to retain its community links in the town where it all began 218 years ago.

"We're very proud of our heritage in Bury St Edmunds," he said. "The crown and arrows features in our logo along with the Bury St Edmunds name. We're



The sculpture before it was unveiled on March 15.

delighted to be part of this sculpture which is on the roundabout near our brewery. Many of our team members will drive past when they're driving into work."

"The sculpture is made of steel and willow and was created by Chevington artist Liz Cooke.

She said it was "very exciting" to see her creation unveiled for the public to see.

"I'm very happy," she said. "I knew I wanted to do it with steel and willow. I loved doing the steel bit. That's the hard structure. You've got the shape with the steel and adding the willow is like colouring it in."

The willow was grown by Lark Valley Willow on the meadows near Greene King.

Children from South Lee and Hardwick primary schools attended the unveiling.



The Mayor's Chain Showing the Wolf Guarding the Head of St Edmund Together the Three Crowns - March 2017



Elizabeth Cooke, Melanie Lesser, Greg Sage Greene King, The Mayor and Gardeners - March 2017



St Edmund's Crown Sculpture - March 2017



# Section C - Community Participation

## C5 - Funding and Support

### Sponsorships

Bury in Bloom would not be able to undertake so many projects within the town without the generous support, of not only our many sponsors (shown on the inside front cover), but also with the tremendous support of our local councils; Suffolk County Council, St Edmundsbury Borough Council and The Town Council. We are incredibly lucky in Bury St Edmunds to have support from so many areas of the community; be that in-kind or financial, which helps to make Bury St Edmunds a truly beautiful place to live, work and visit.



Maynwater Lane Triangle - March 2017



Kings Road Roundabout - August 2016



Risbygate Roundabout - August 2016

Friday, September 2, 2016 | EAST ANGLIAN DAILY TIMES



■ The Carlton Smith team and Bury in Bloom's Melanie Lesser (back left) with the plaque set for the Kings Road roundabout.

Picture: CONTRIBUTED

## Roundabout sponsor backs Bury in Bloom

A local company has given its backing to Bury St Edmunds in Bloom by sponsoring a floral roundabout.

Carlton Smith Private Wealth, based in Onehouse, near Stowmarket, has sponsored the Kings Road Roundabout, which has the eye-catching 'With the Grain' sculpture in the centre.

Nic Carlton-Smith, financial planner, said: "We are delighted to sponsor this roundabout in Bury as it promotes our company in the centre of the town."

"The company are happy to support this local charity which helps to make Bury St Edmunds so attractive to residents and visitors."



